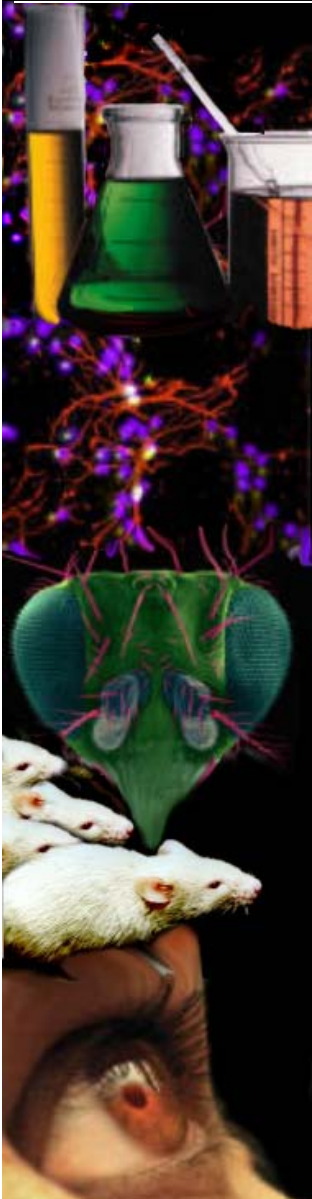
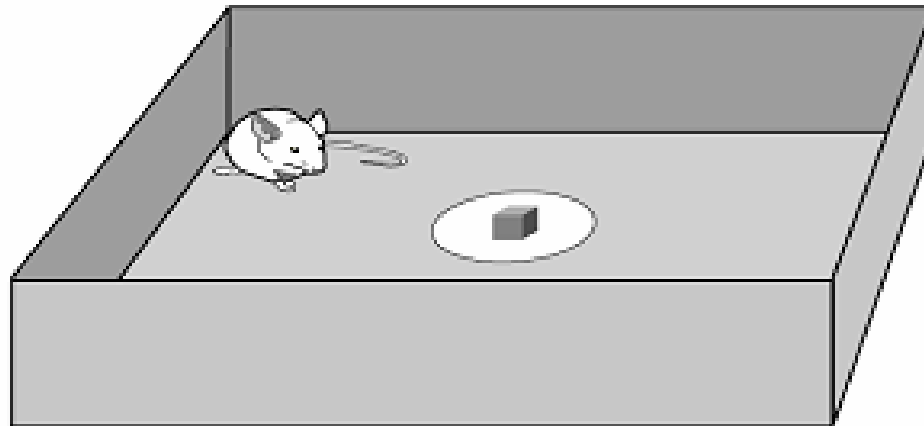


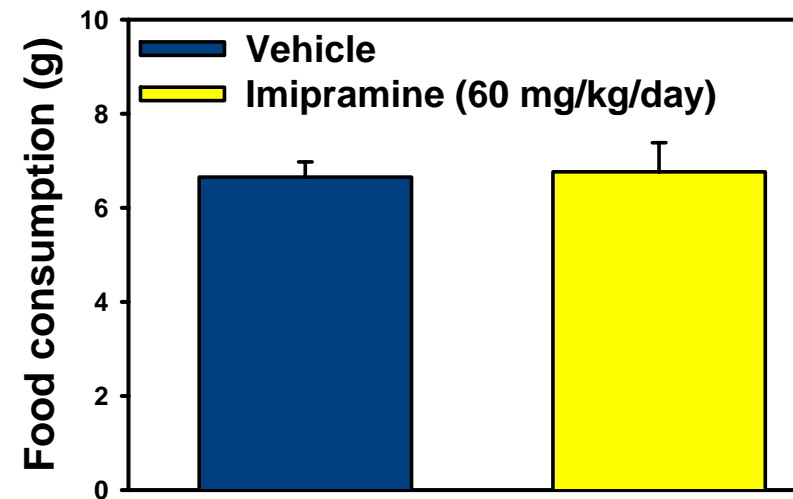
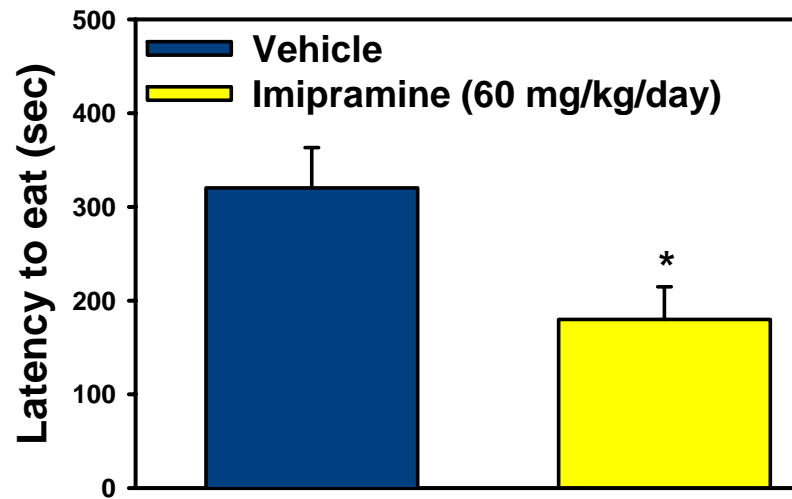
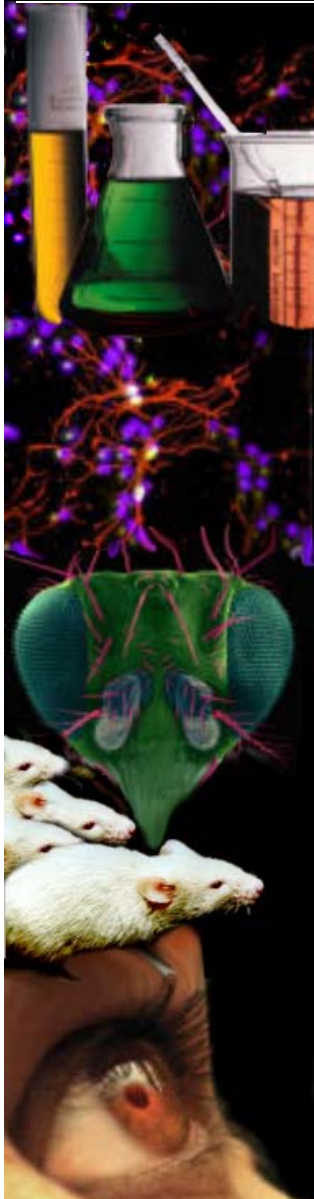
Behavior Paradigms for Depression and Sexual Function

Novelty Suppressed Feeding

NSF measures a rodent's aversion to eating in a novel environment. Chronic administration of antidepressants will decrease the latency to eat.

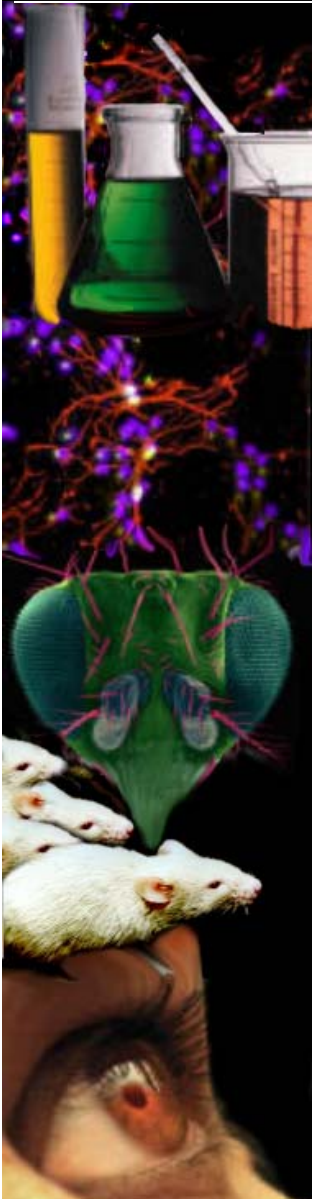


Imipramine decreases latency to eat

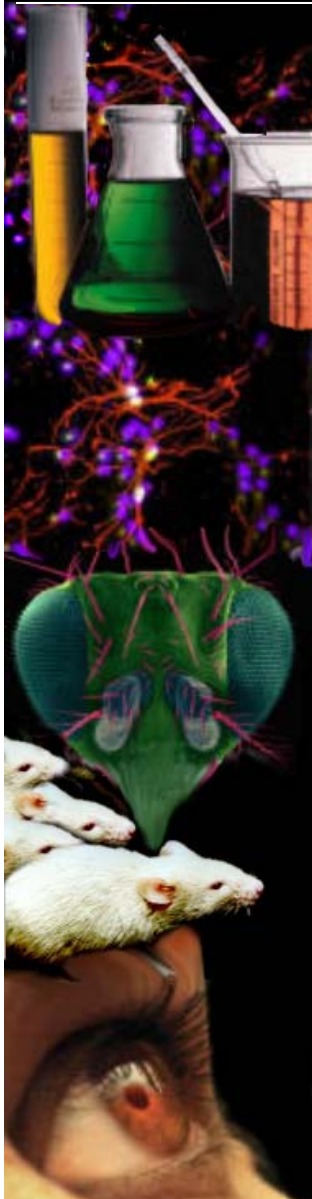


Forced Swim Test in Rats

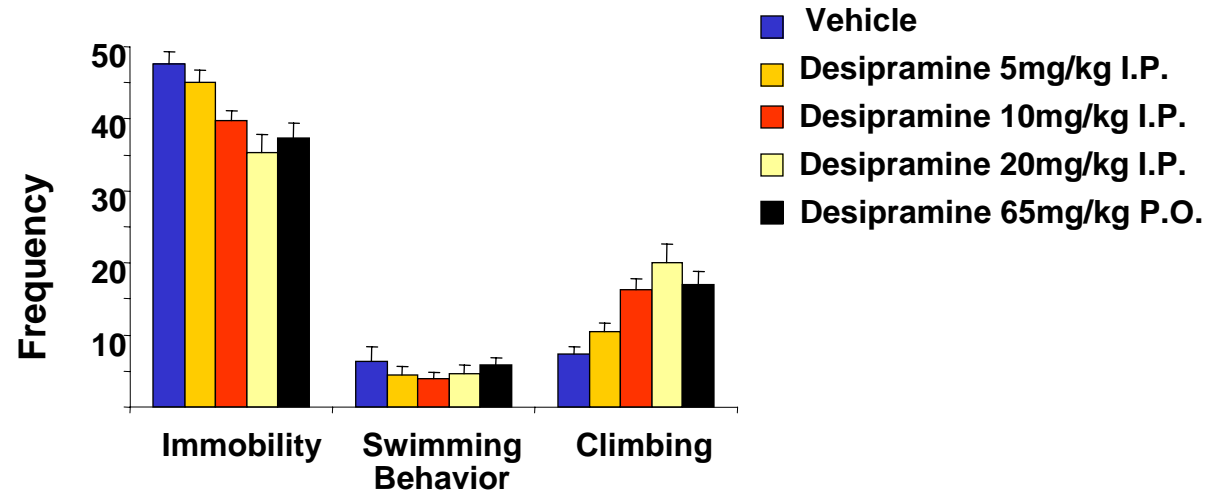
Test of learned helplessness. Measures immobility climbing and swimming behaviors. Can pick up differences in the effects of SSRIs vs Tricyclic antidepressants



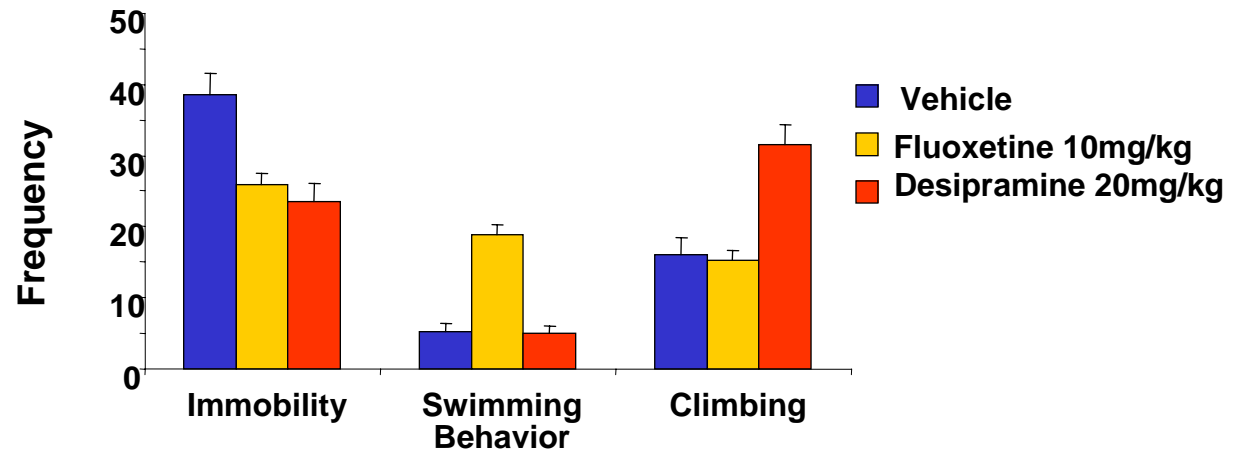
Forced Swim Test In Rats: *Tricyclics and SSRIs*



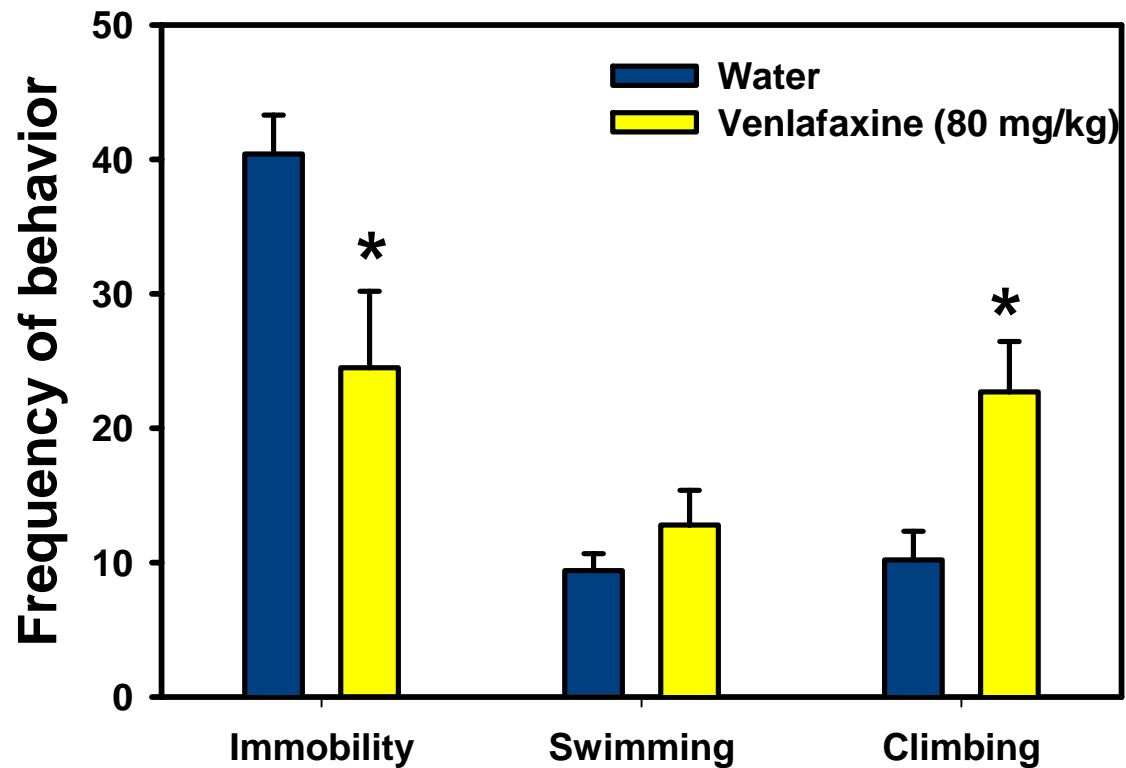
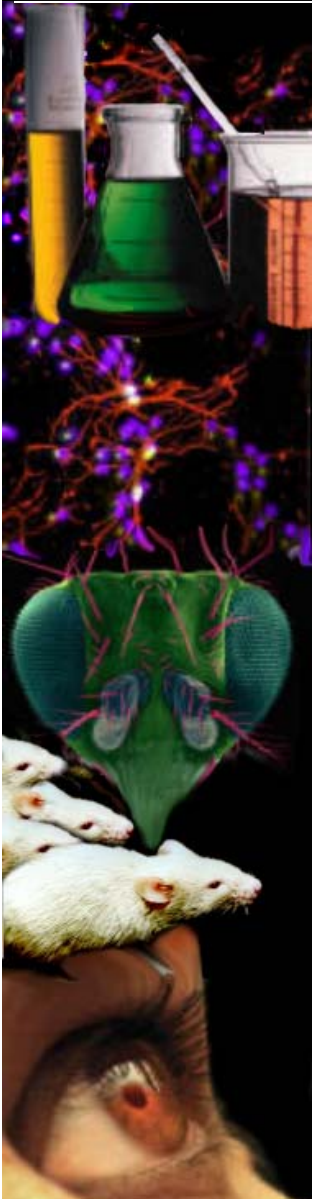
Desipramine



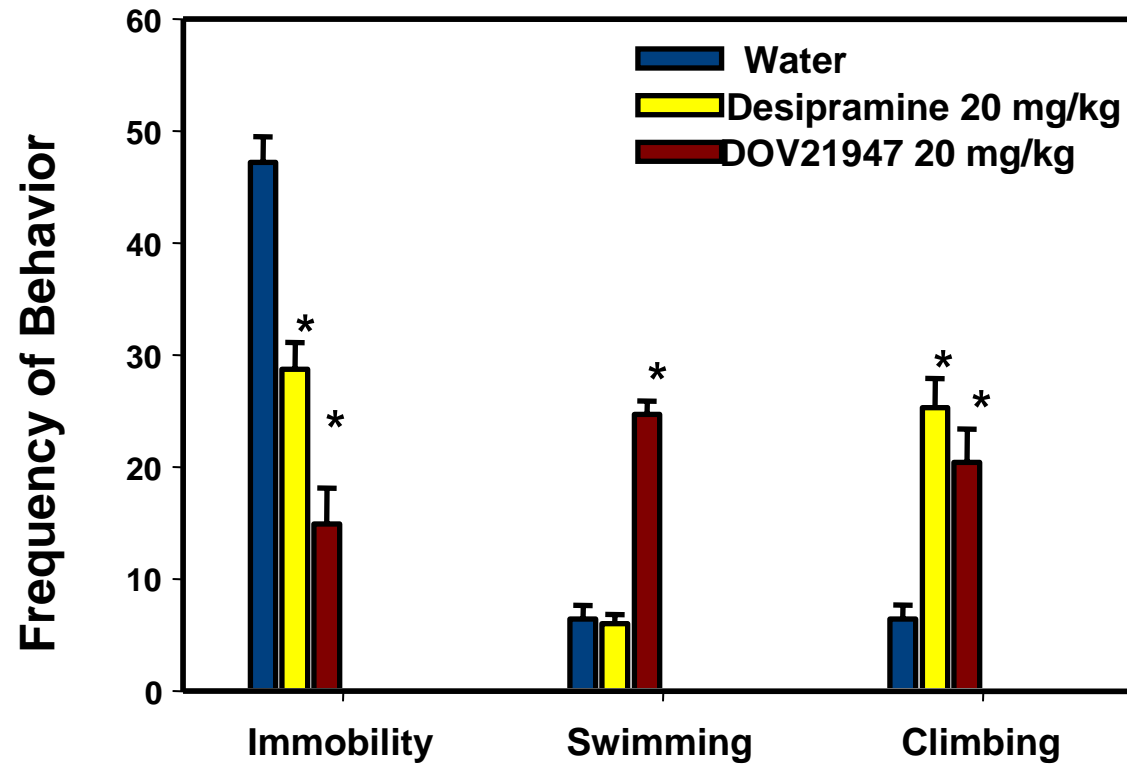
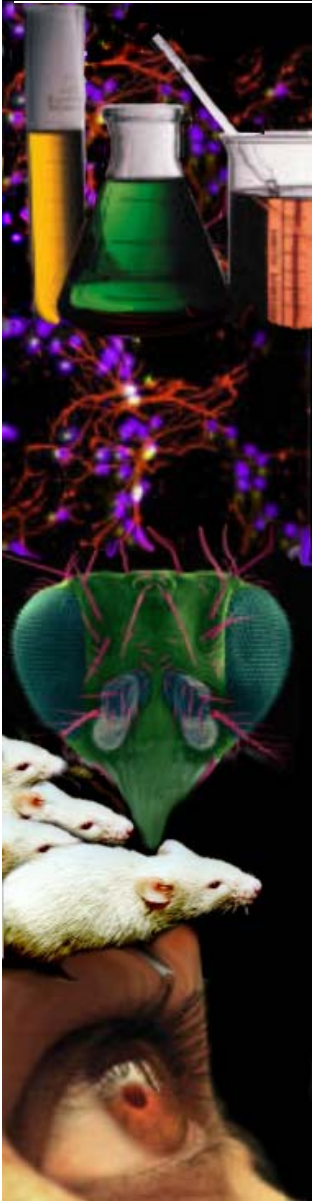
Fluoxetine



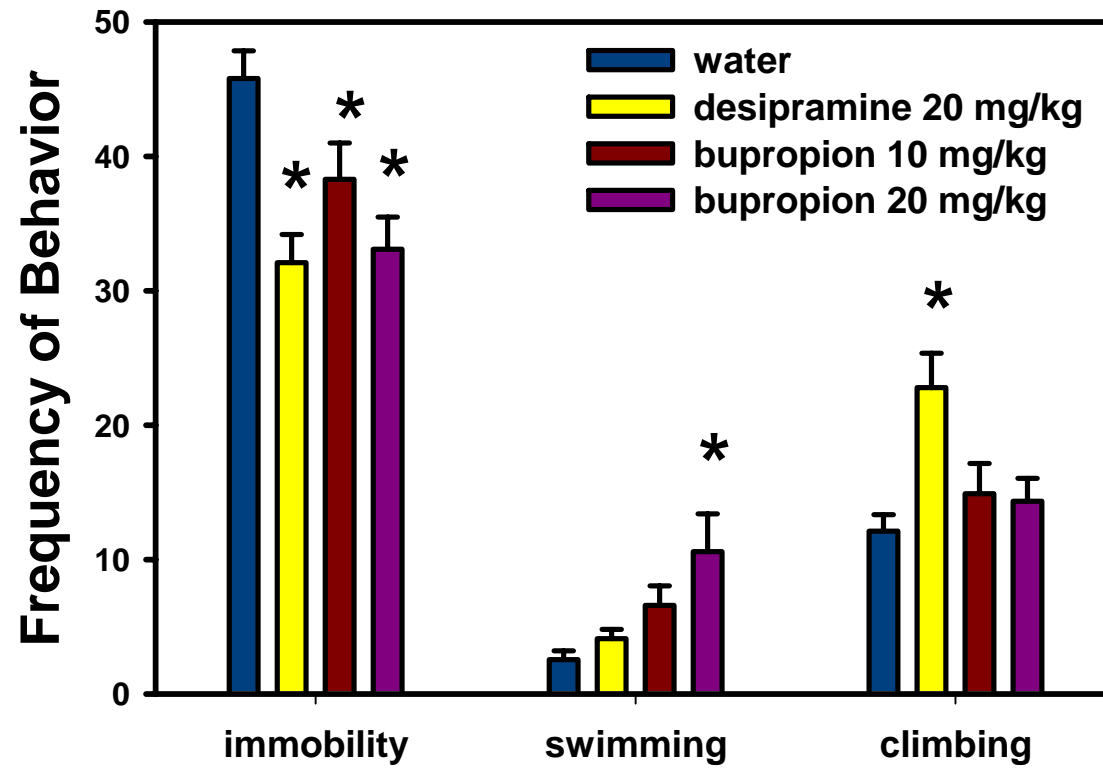
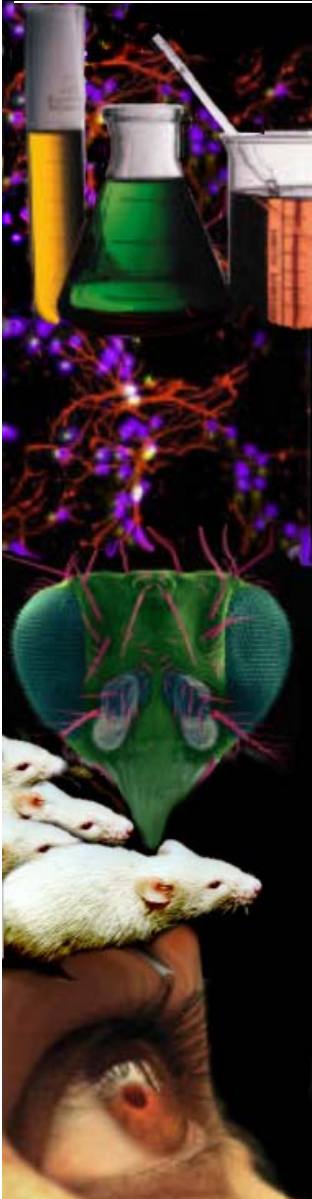
Effect of SNRIs on rat FST



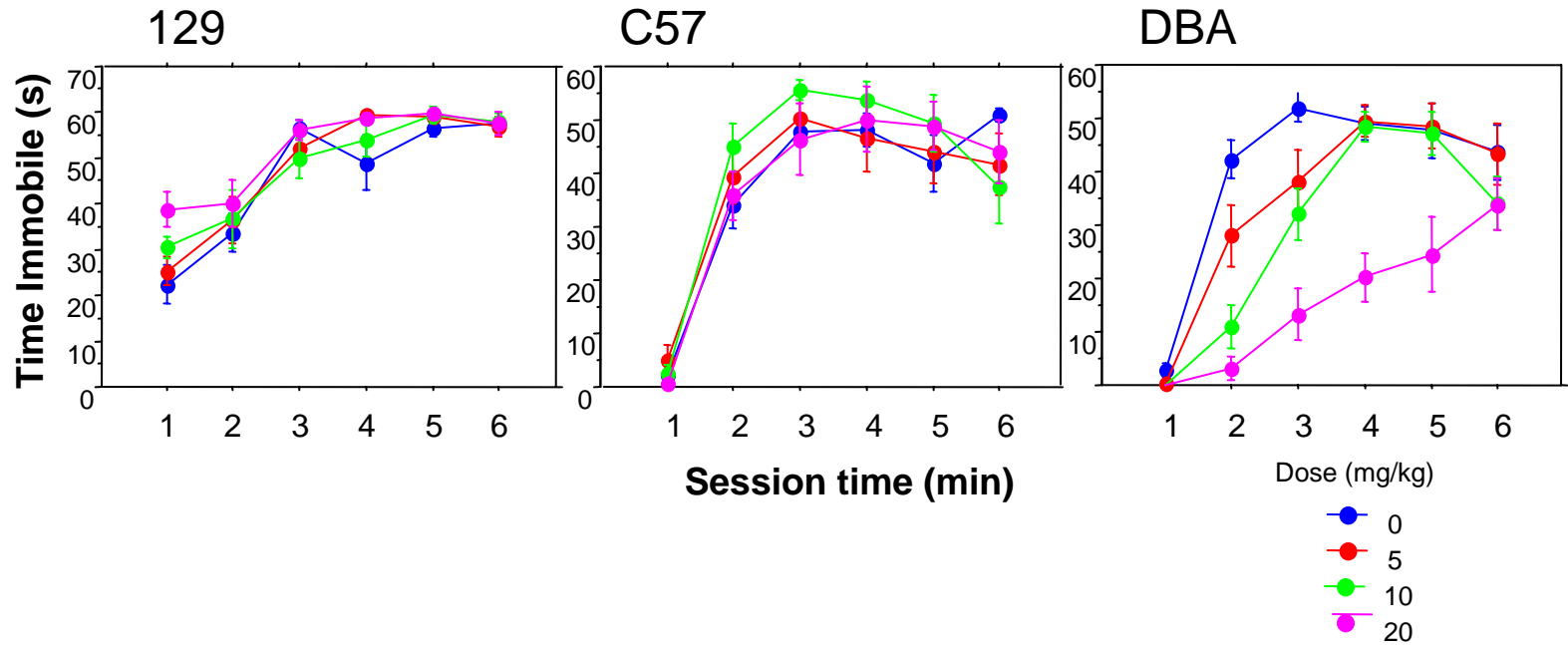
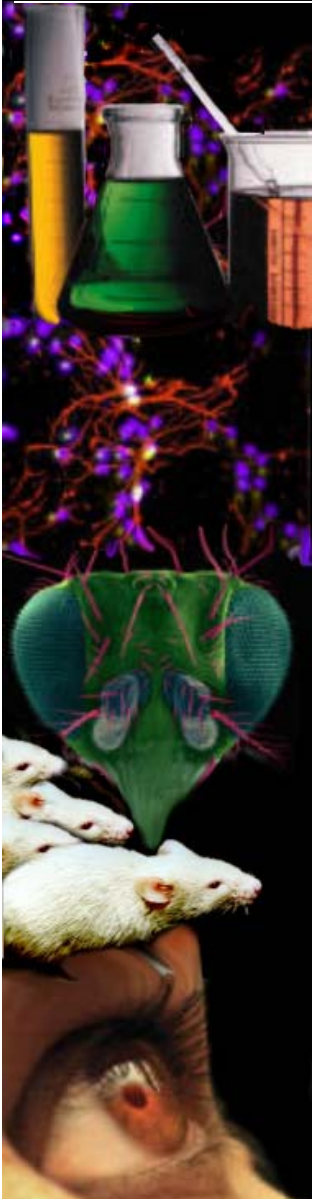
Effect of triple uptake inhibitor on rat FST



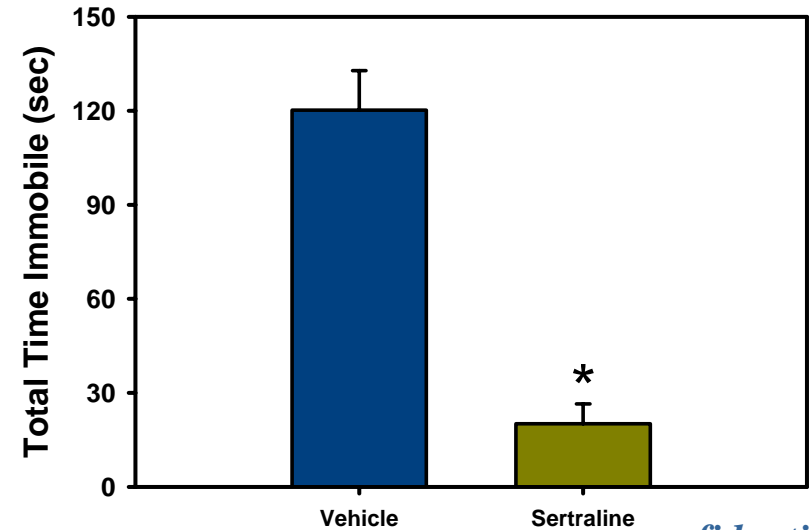
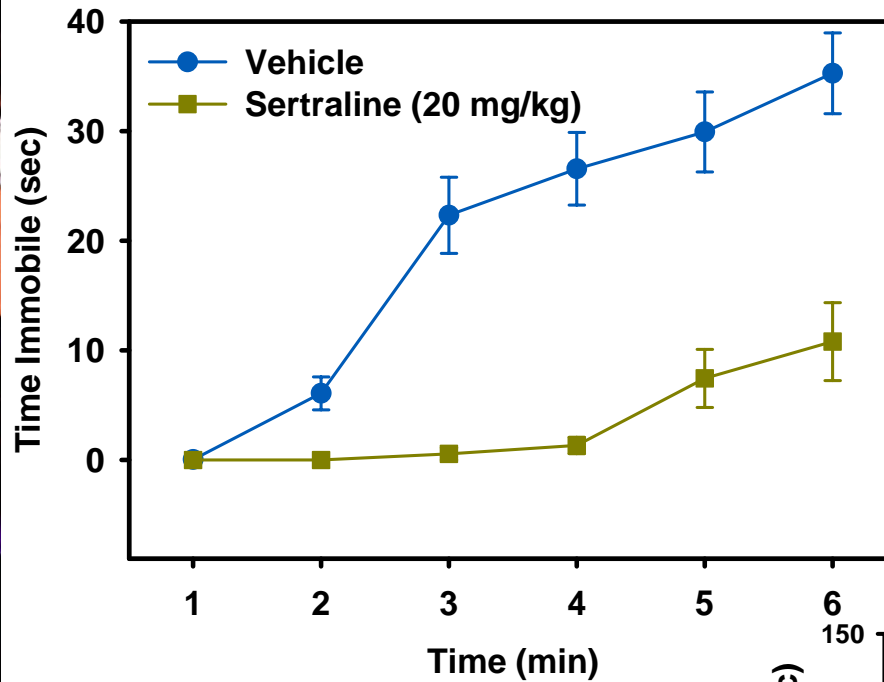
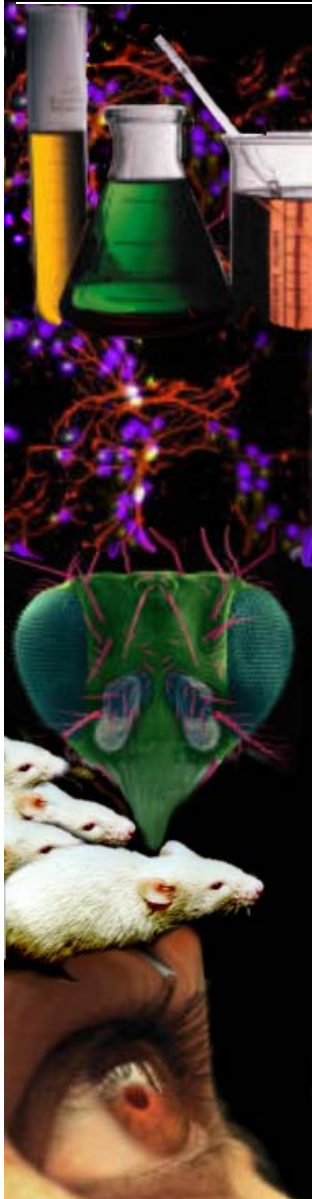
Effect of bupropion on FS in Wistar rats



Comparison of three mouse strains in their responsiveness to sertraline in the FS test



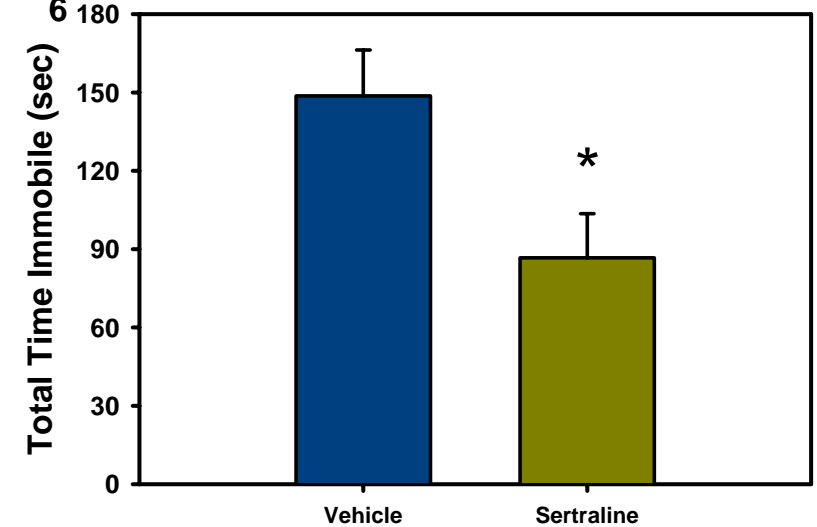
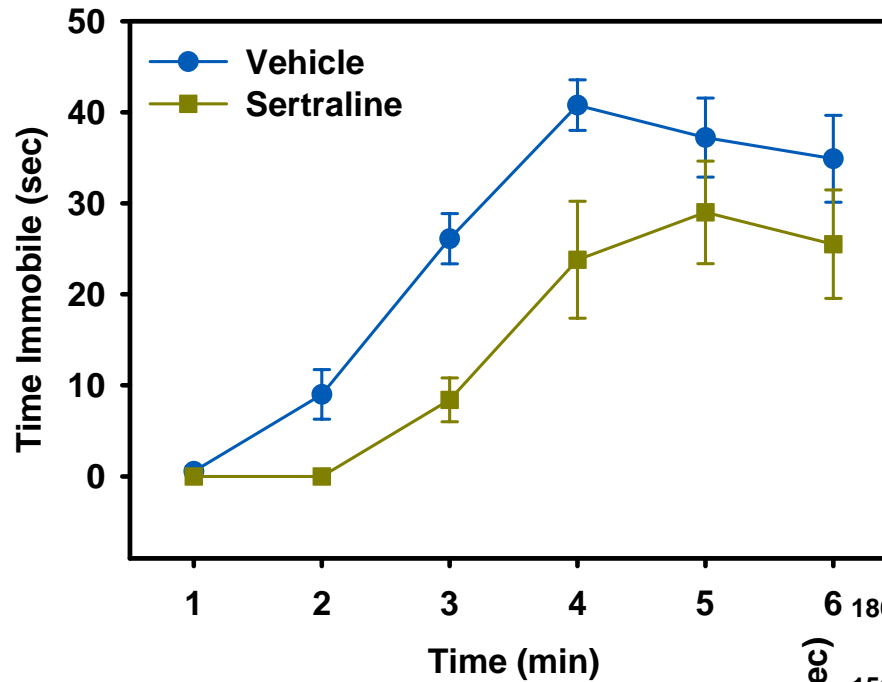
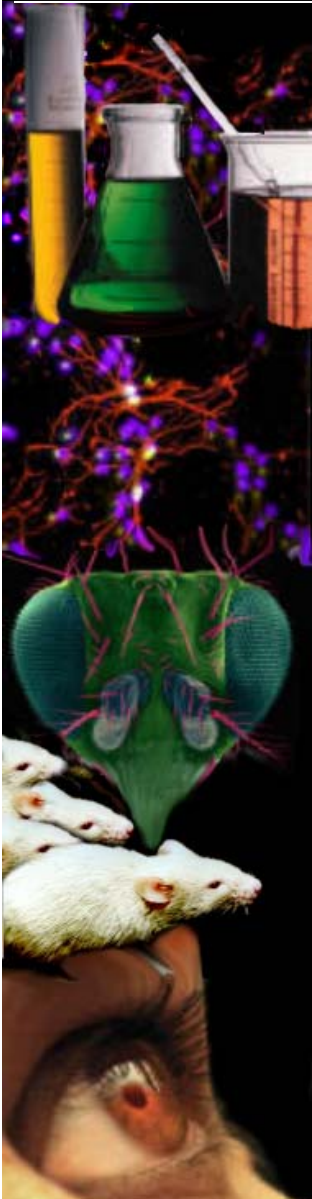
Sertraline decreases time immobile in the mouse forced swim test in Balb/C mice





PsychoGenics

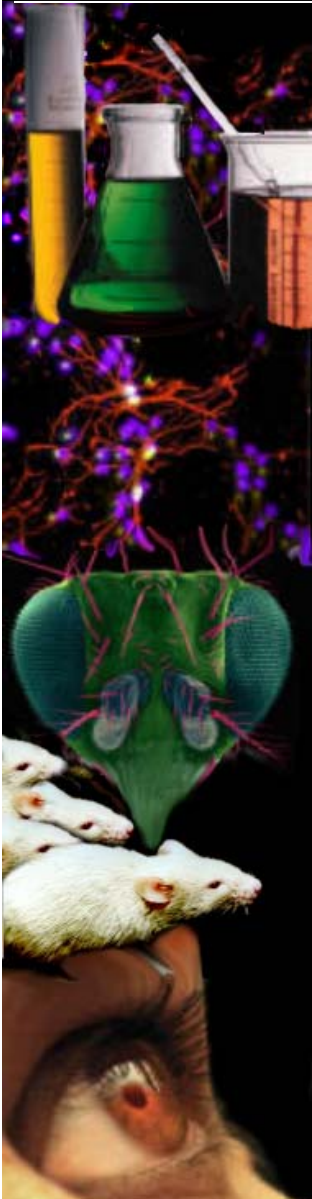
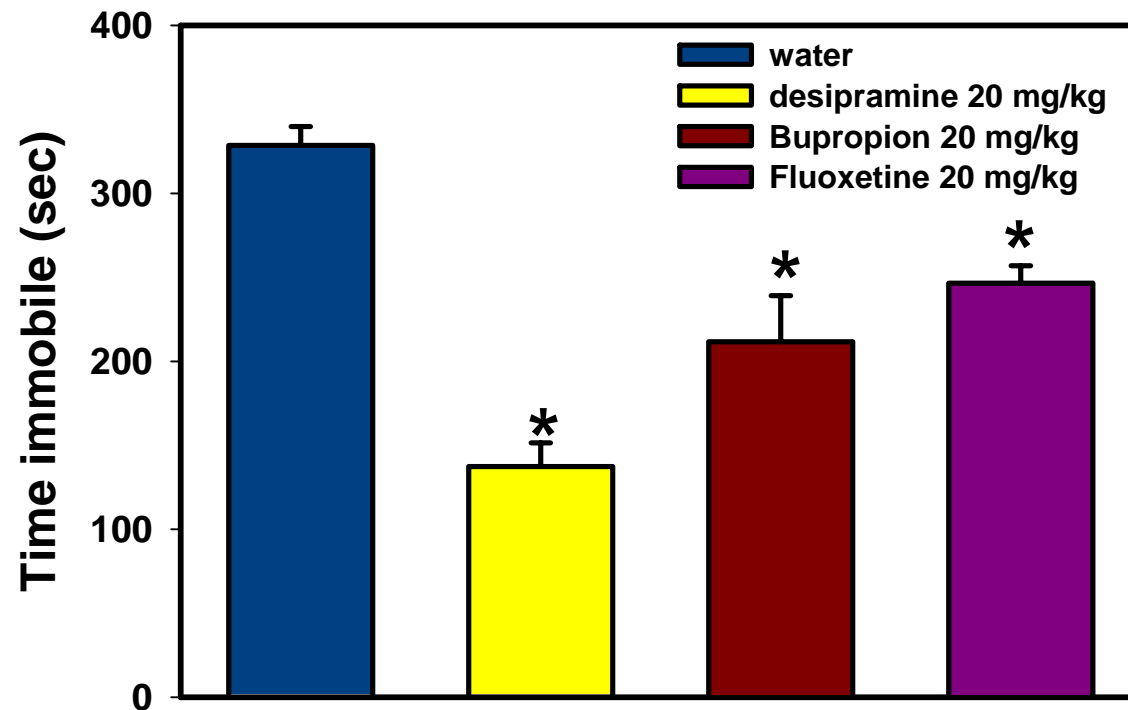
Sertraline decreases time immobile in the mouse forced swim test in A/J mice



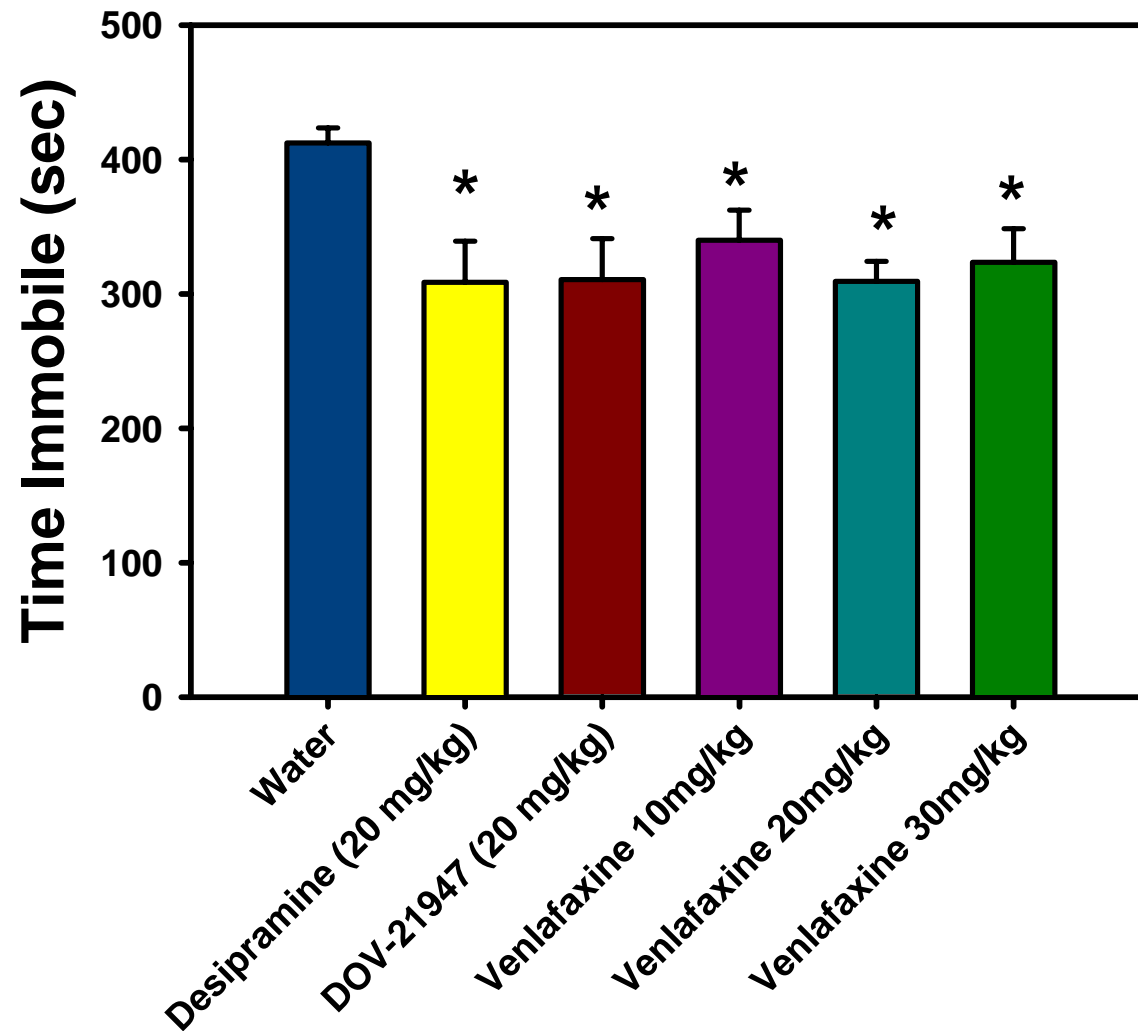
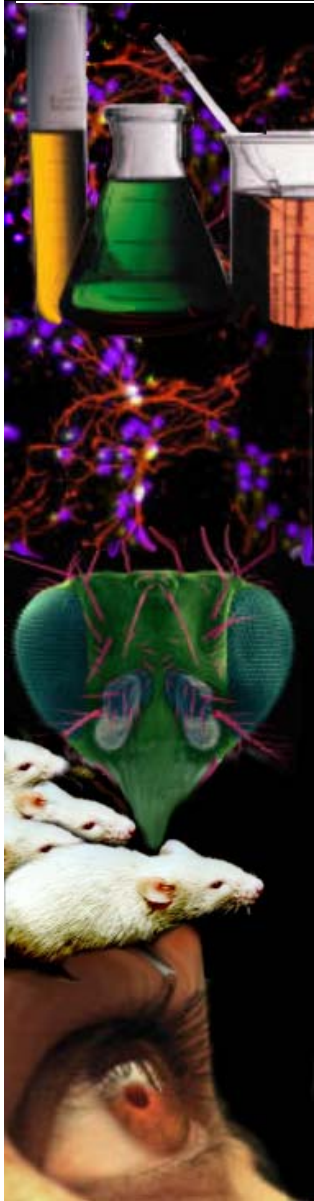
confidential

Tail Suspension in A/J mice

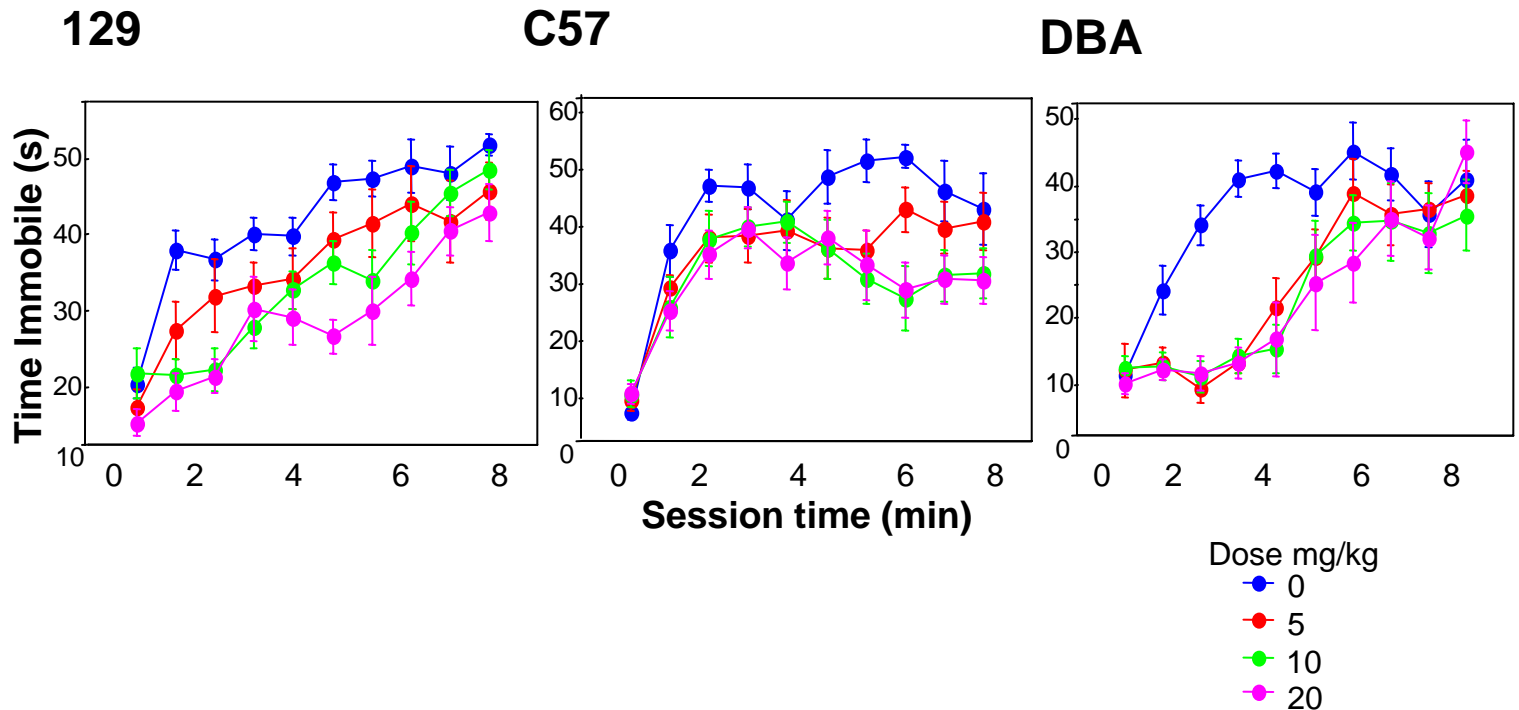
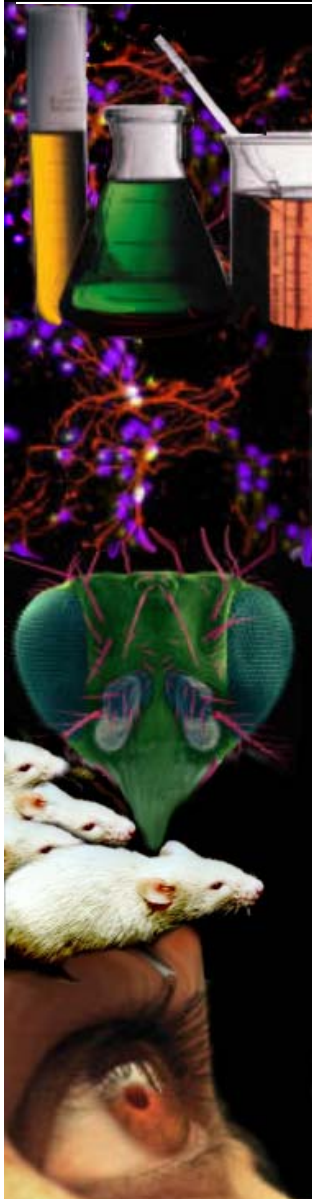
Test of learned helplessness similar to Forced Swim Test. Antidepressant compounds decrease the time spent immobile in this test.



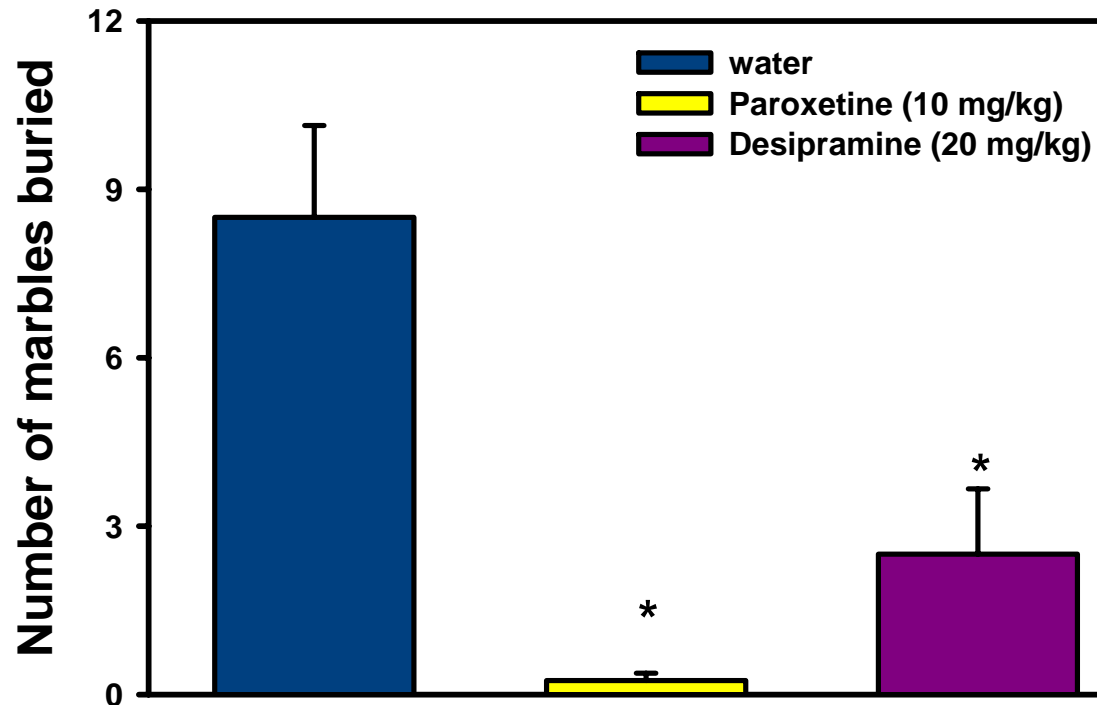
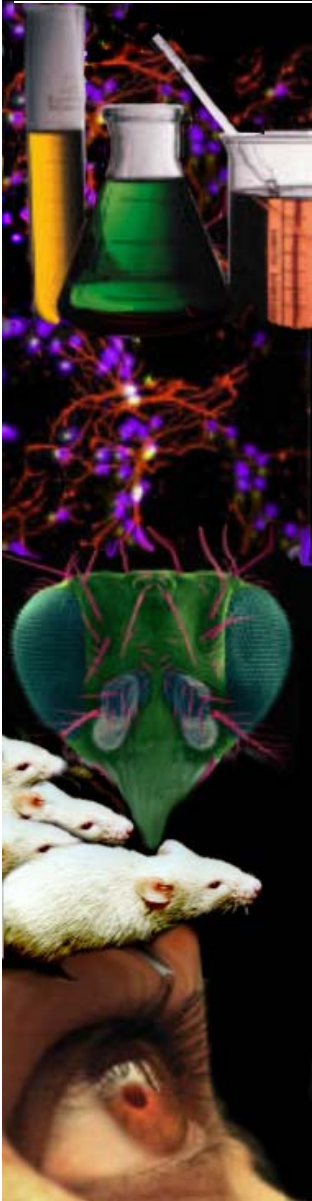
Triple and double re-uptake inhibitors decrease immobility in the TS test in 129SVEV mice



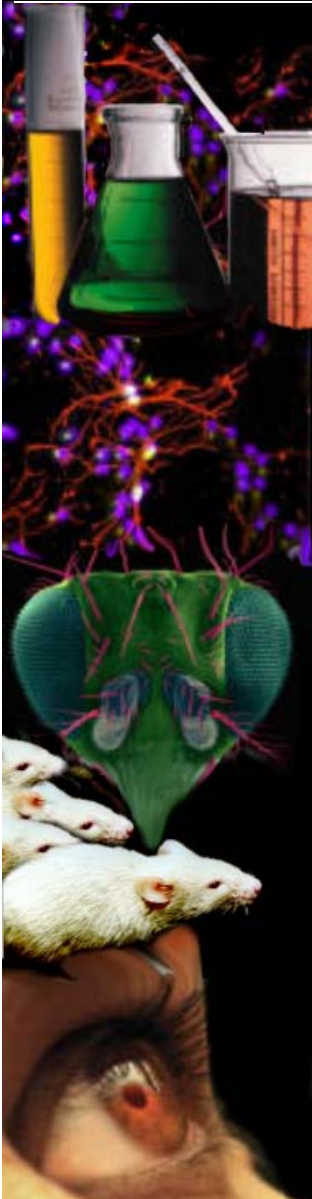
Comparison of three mouse strains in their responsiveness to desipramine in the TS test



Antidepressants decrease marble burying in C57Bl/6J mice



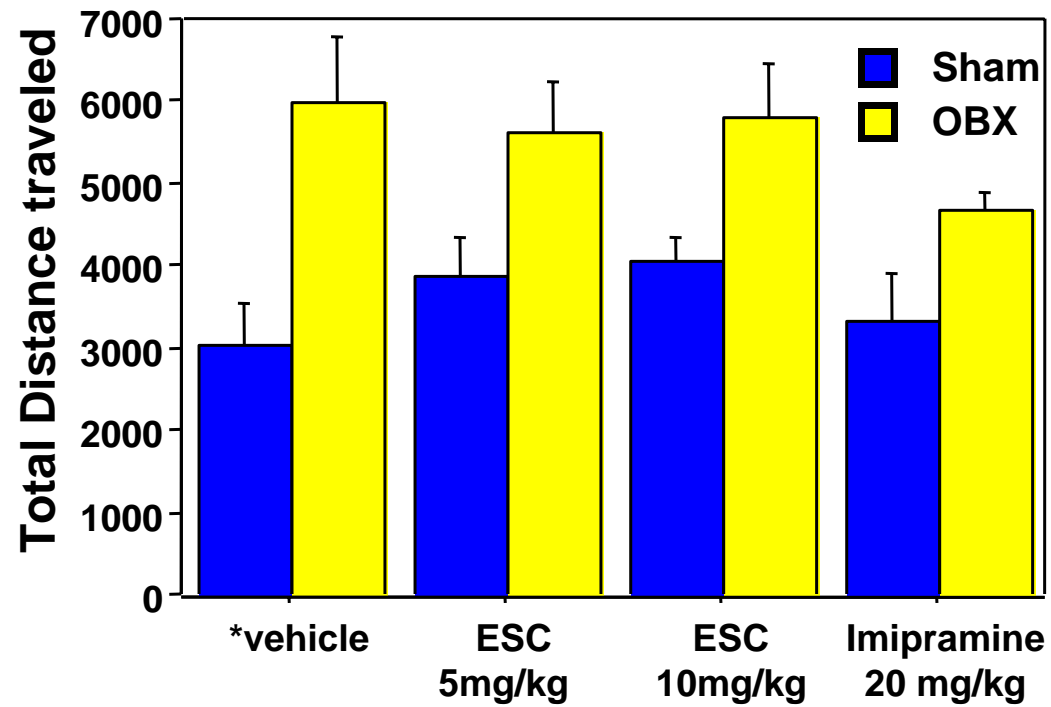
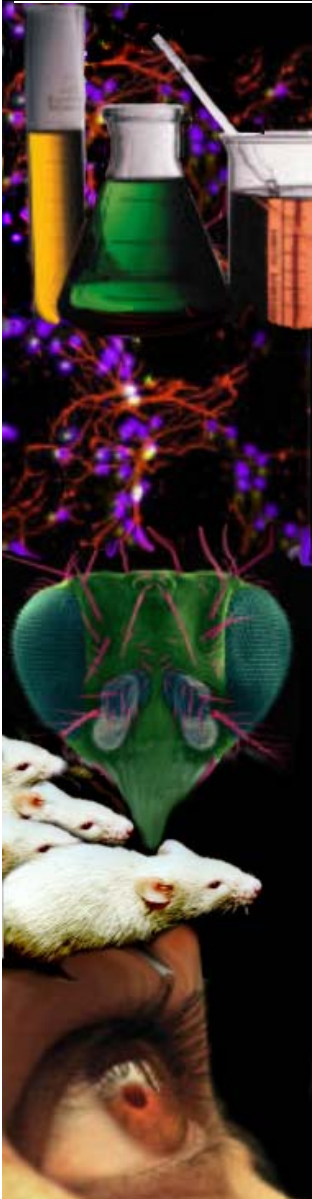
Rat Olfactory Bulbectomy (OBX)



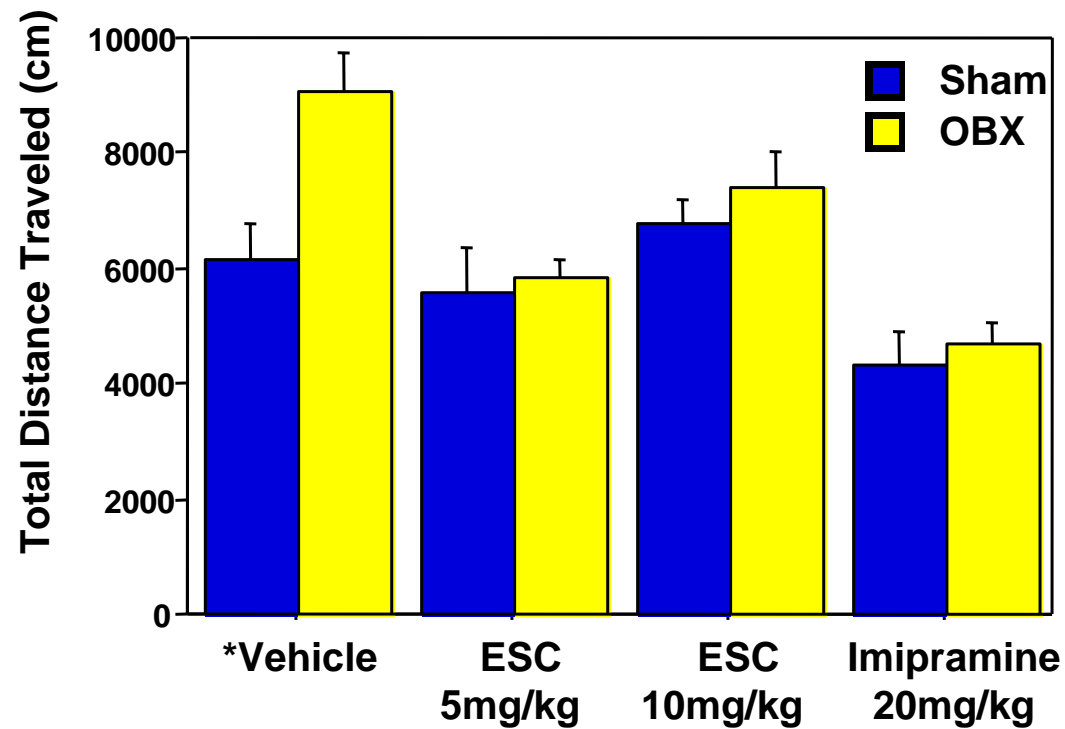
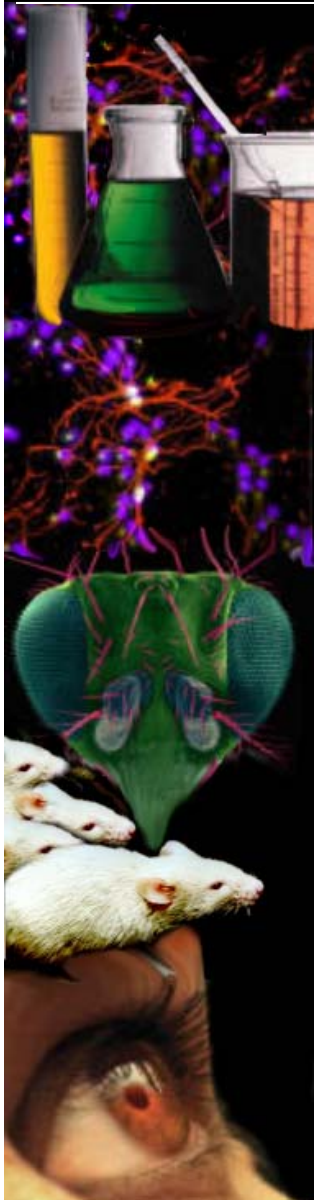
Bilateral destruction of the olfactory bulbs will cause a state of monoamine dysfunction in rats comparable to that seen in patients suffering from depression.

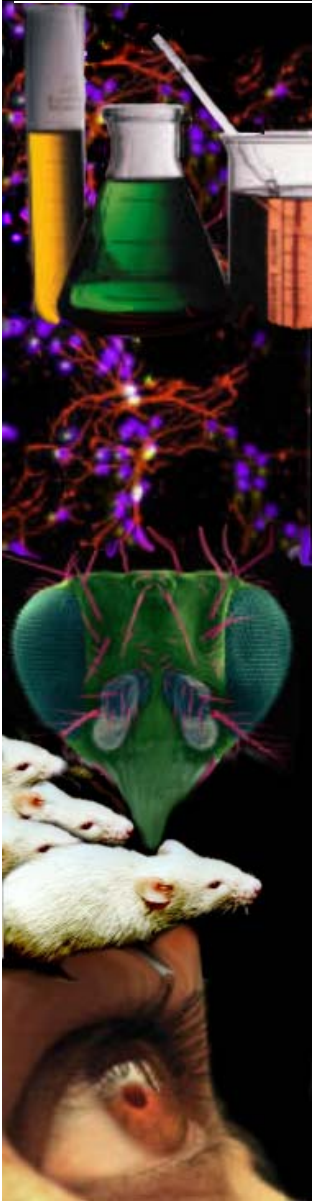
Compared to normal rats, OBX rats show a marked hyperactivity that is normalized only upon chronic treatment with antidepressants.

Acute imipramine and escitalopram have no effect on activity of the OBX rats



Chronic imipramine and escitalopram normalizes activity of the OBX rats

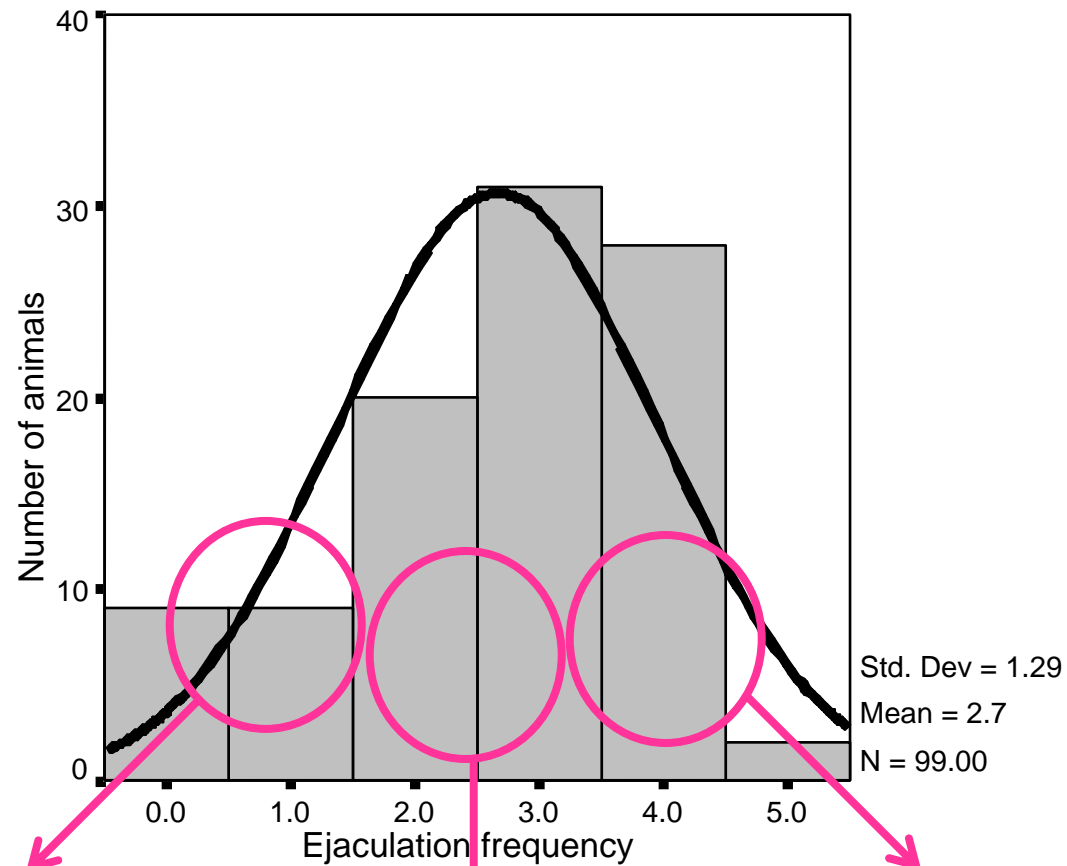




Sexual Function

Endophenotype Selection

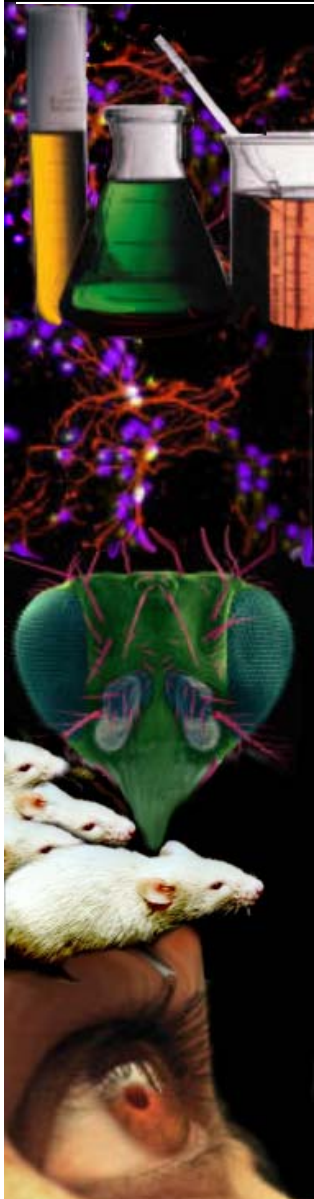
Normal distribution of ejaculation frequency during 30min exposure to receptive female



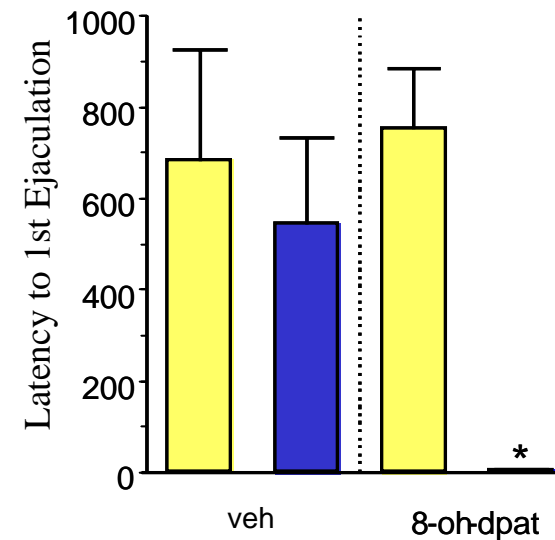
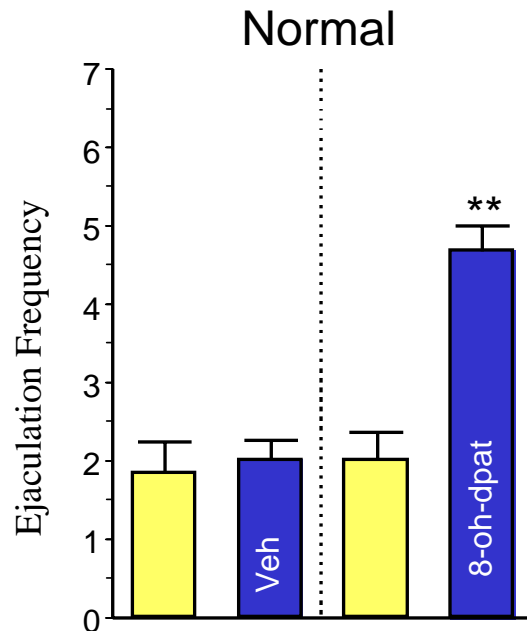
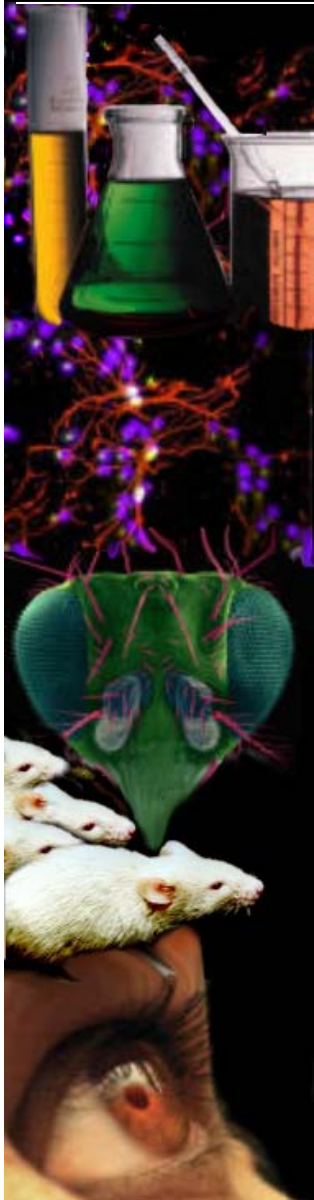
'delayed' ejaculation
(n=12)

'normal' ejaculation
(n=12)

'rapid' ejaculation
(n=12)



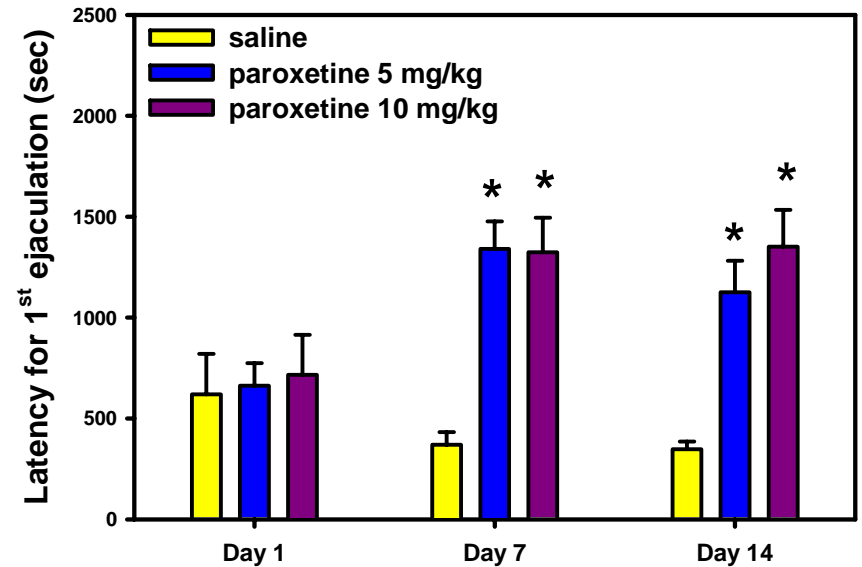
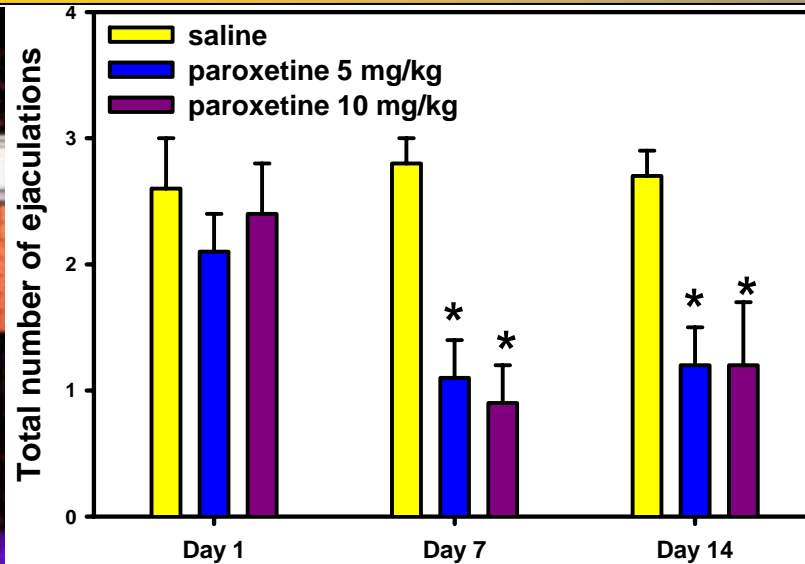
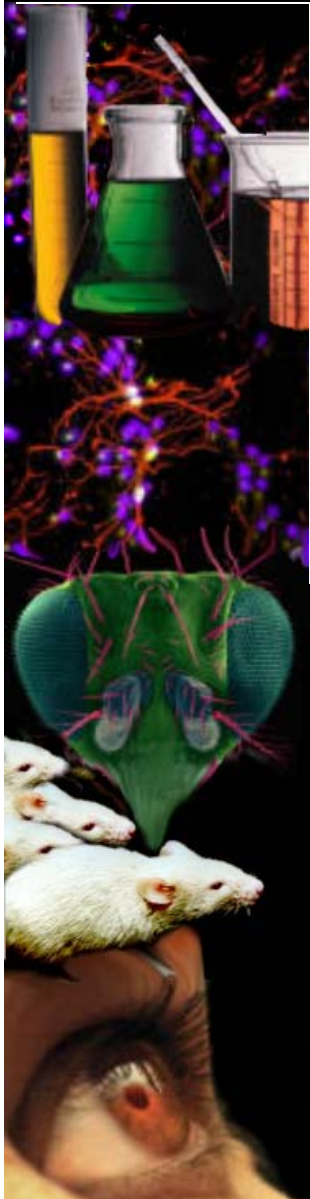
Effects of 8-OH-DPAT on ejaculation frequency



* indicates $P < 0.05$
** indicates $P < 0.005$

Ejaculation Frequency and Ejaculation Latency during baseline training (yellow bars) and test with either vehicle control or 0.8mg/kg 8-OH-DPAT (blue bars).

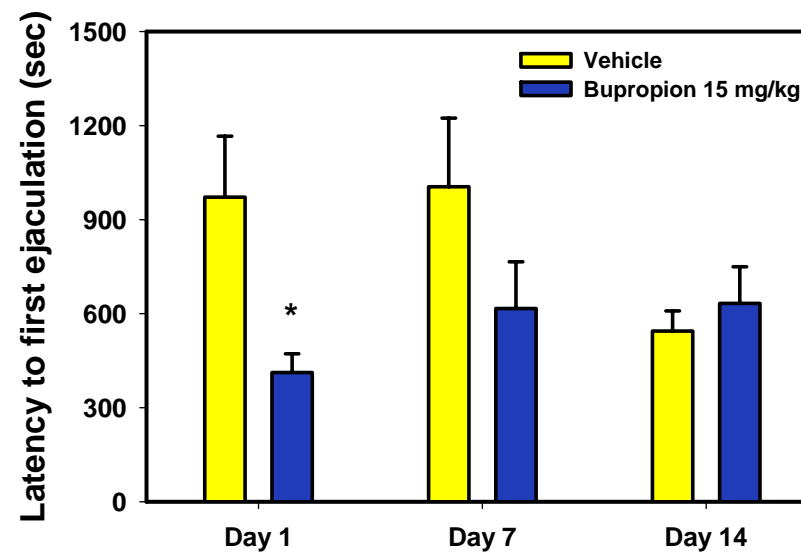
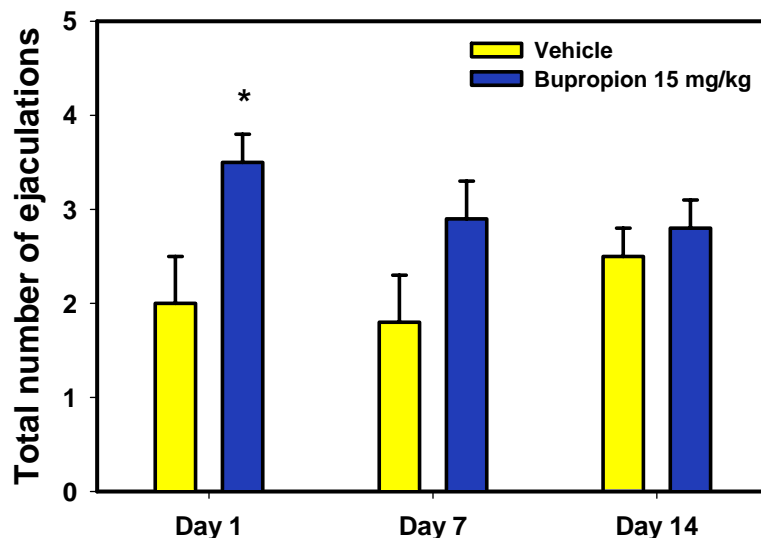
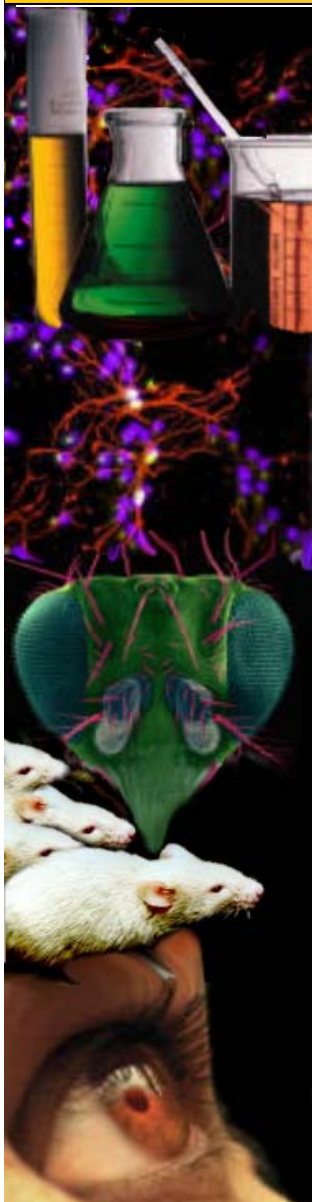
Chronic treatment with paroxetine decreases sexual function.





PsychoGenics

Acute bupropion stimulates, but chronic treatment has no effect on sexual function



confidential

Chronic treatment with venlafaxine has no effect on sexual function.

